



EASTBROOK STUDIOS LONDON

EASTBROOK STUDIOS LONDON

London's Film and TV studios

Eastbrook Studios is London's largest film and TV studio campus.

Created by film and television facilities specialists The MBS Group and Hackman Capital Partners, the brand new 21.5 acre campus is home to 12 sound stages ranging in size from 16,000 square feet to 32,000 square feet.

The state-of-the-art purpose-built stages offer up to 50 foot clear heights, operable walls between stages to allow for interconnectivity, and gantries, along with specialised workshop, office and production support spaces. Generous backlot areas are available for exterior film sets, along with a wealth of nearby cityscapes, urban landscapes and rural locations.

The new studios have transformed a previously redundant East London lot into one of the most sustainable facilities in the world, with a BREEAM rating of Excellent. Marking further investment in the area, the studio team are also proud to be working closely with the London Borough of Barking and Dagenham to create opportunities for education and employment within the local community.

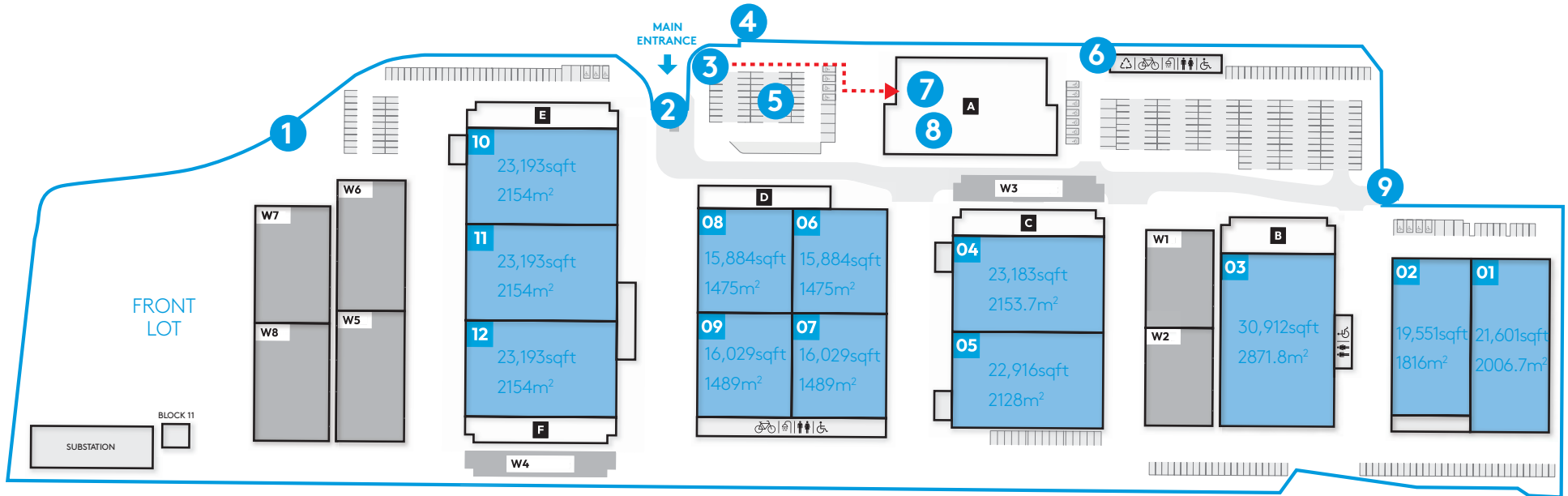
With excellent access in and out of the capital, Eastbrook Studios is situated on the London Underground District Line, with London City Airport only 15 minutes away.

'Powered by MBS', Eastbrook is backed by the industry's foremost studio operating and technical teams, providing direct access to one of the world's leading production equipment resources.

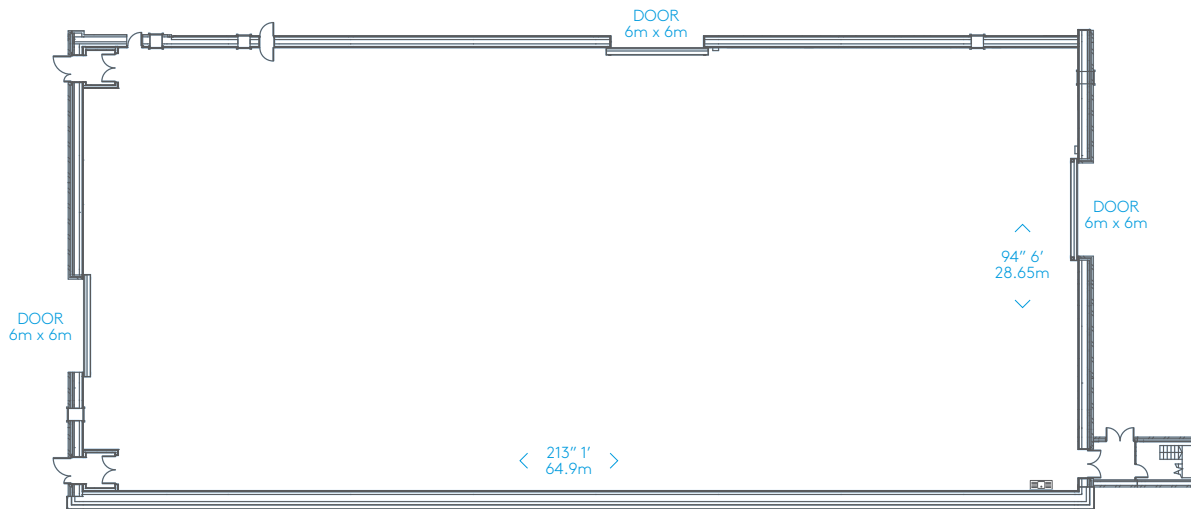
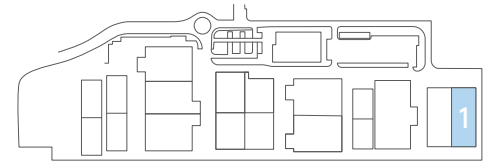
- 12 state-of-the-art sound stages
- 190,000sqft of production office and support space
- 87,000sqft of workshops
- 3.5 acre backlot
- Stages equipped to accommodate virtual production
- 50ft clear heights
- Interconnecting stages with operable acoustic walls
- BREEAM rating of 'excellent'
- Bio-diverse green roofs
- Solar energy sources
- All electric and zero carbon HVAC
- Surrounded by a wealth of urban cityscapes and rural locations
- Ample parking
- Excellent transport links
- EV charging
- Located on the London Underground District Line



EASTBROOK STUDIOS LONDON



- | | |
|------------------------------------|---|
| 1 FRONT GATE | 6 STAFF GATE |
| 2 MAIN GATE | 7 RECEPTION/BUILDING A |
| 3 MAIN PEDESTRIAN ENTRANCE | 8 STUDIO OPERATIONS OFFICE SUITE |
| 4 LONDON EAST SECURITY GATE | 9 BACK GATE |
| 5 VISITOR CAR PARK | PEDESTRIAN ROUTE |



STAGE 01

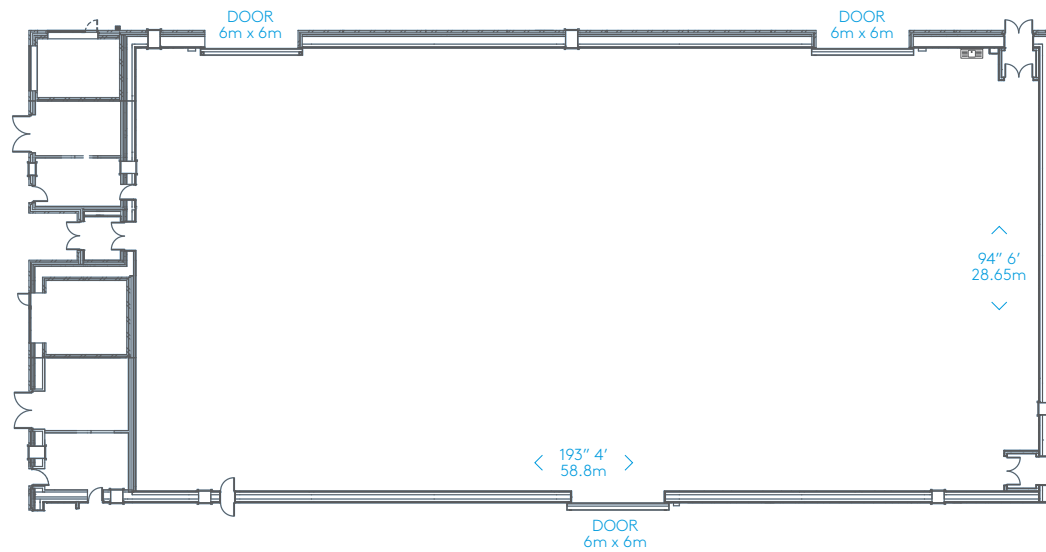
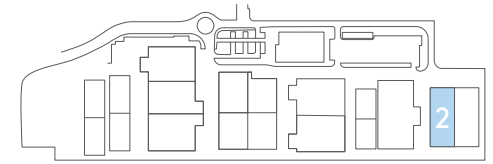
21,601sqft/2006.7m²

213' 1" x 94' 6"

64.9m x 28.65m

Clear height: 35' 7½"/10.85m

Drive in access: 6m x 6m



STAGE 02

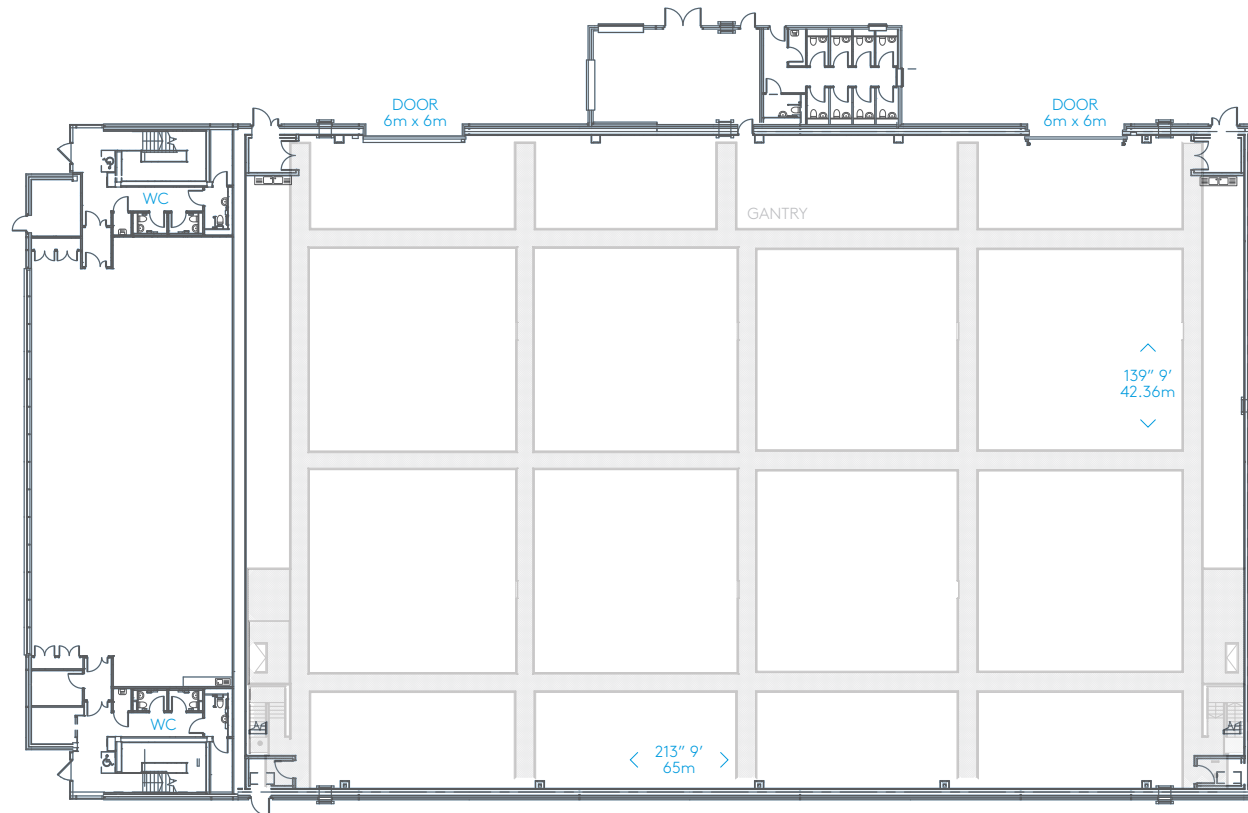
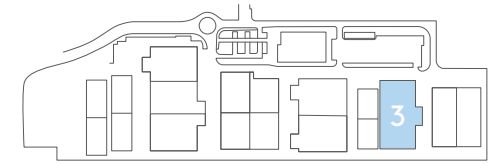
19,551sqft/1816.3m²

193' 4" x 94' 6"

58.8m x 28.65m

Clear height: 35' 7½"/10.85m

Drive in access: 6m x 6m



STAGE 03

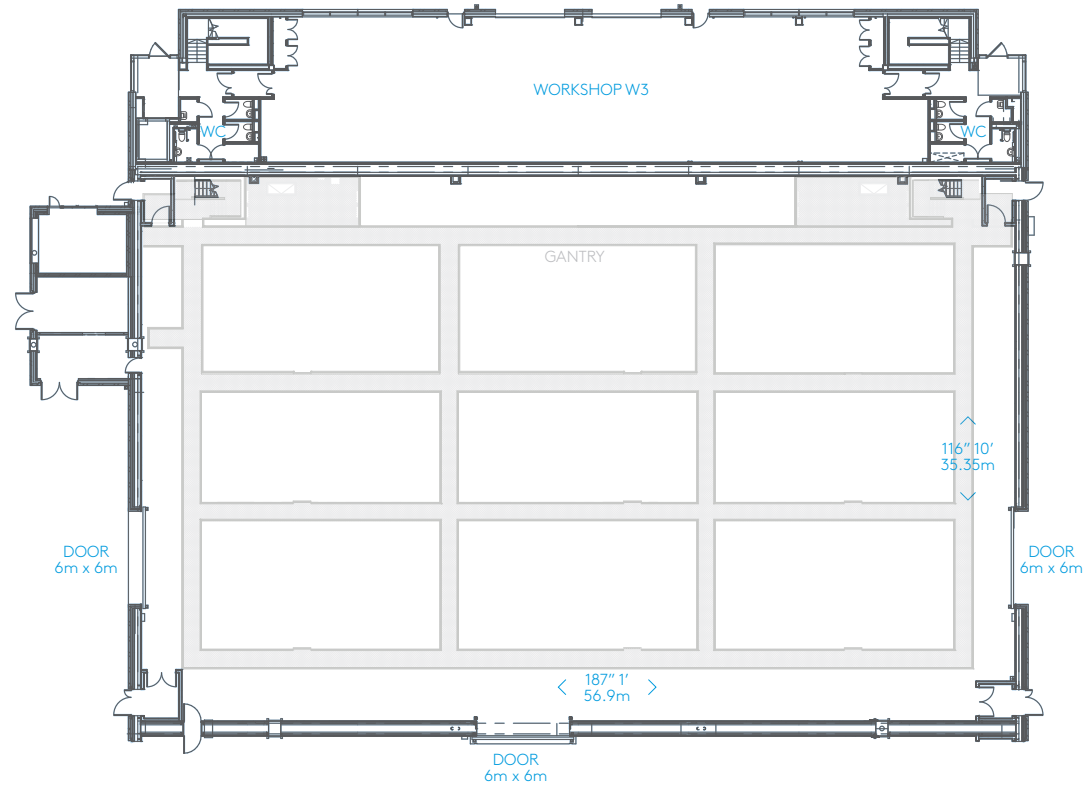
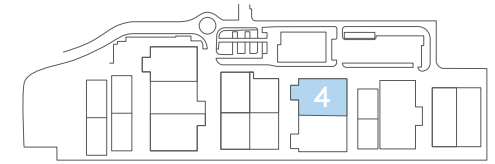
30,912sqft/2871.8m²

213' 9" x 139' 9"

65m x 42.36m

Clear height: 50'/15.24m

Drive in access: 6m x 6m



STAGE 04

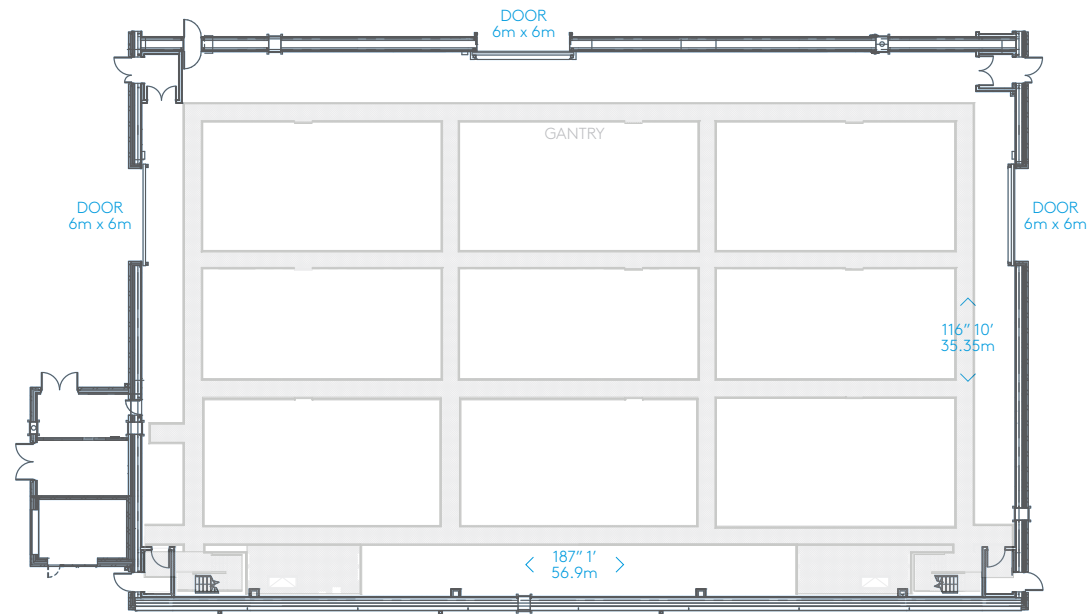
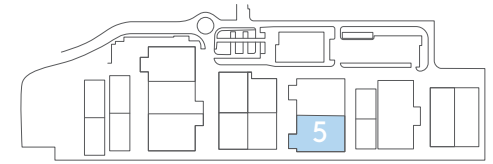
23,183sqft/2153.7m²

187' 1" x 116' 10"

56.9m x 35.35m

Clear height: 50'/15.24m

Drive in access: 6m x 6m



STAGE 05

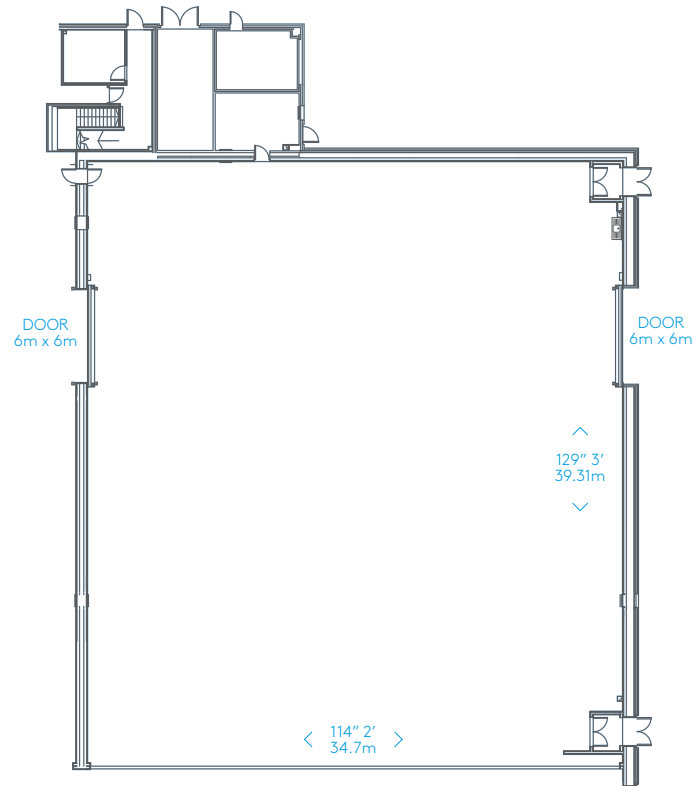
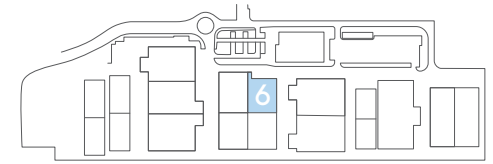
22,916sqft/2128.9m²

187' 1" x 116' 10"

56.9m x 35.35m

Clear height: 50'/15.24m

Drive in access: 6m x 6m



STAGE 06

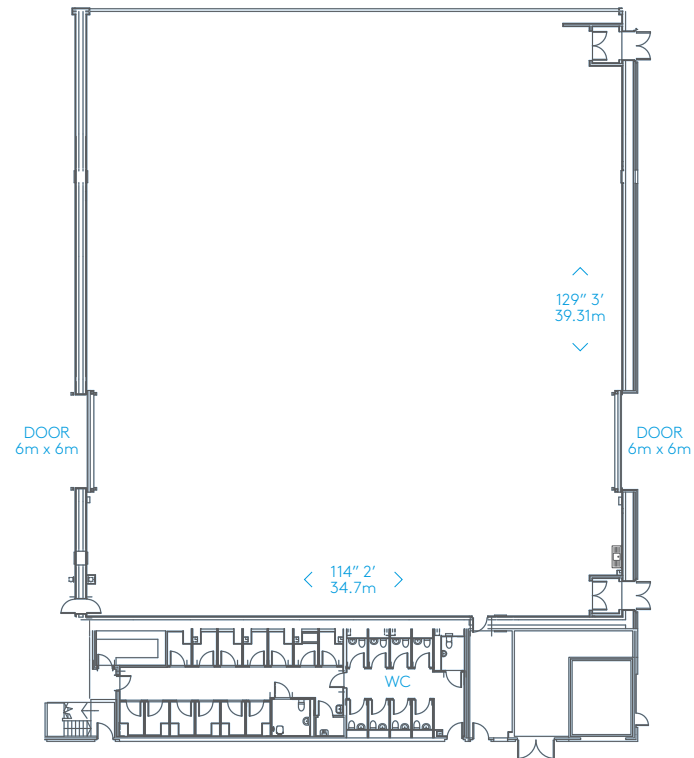
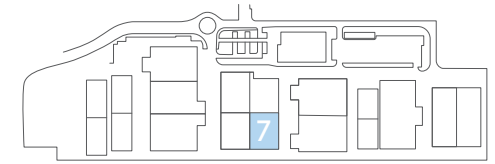
15,884sqft/1475.6m²

129' 3" x 114' 2"

39.31m x 34.7m

Clear height: 35' 6"/10.83m

Drive in access: 6m x 6m



STAGE 07

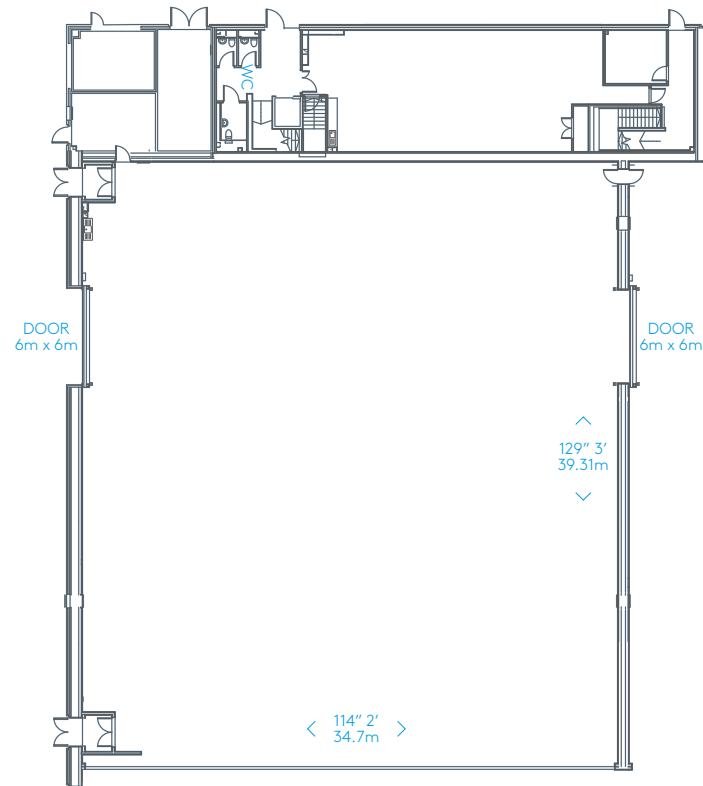
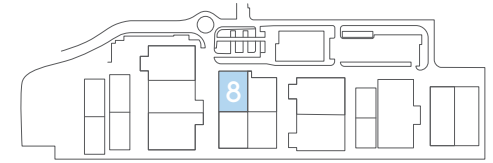
16,029sqft/1489.1m²

129' 3" x 114' 2"

39.31m x 34.7m

Clear height: 35' 6"/10.83m

Drive in access: 6m x 6m



STAGE 08

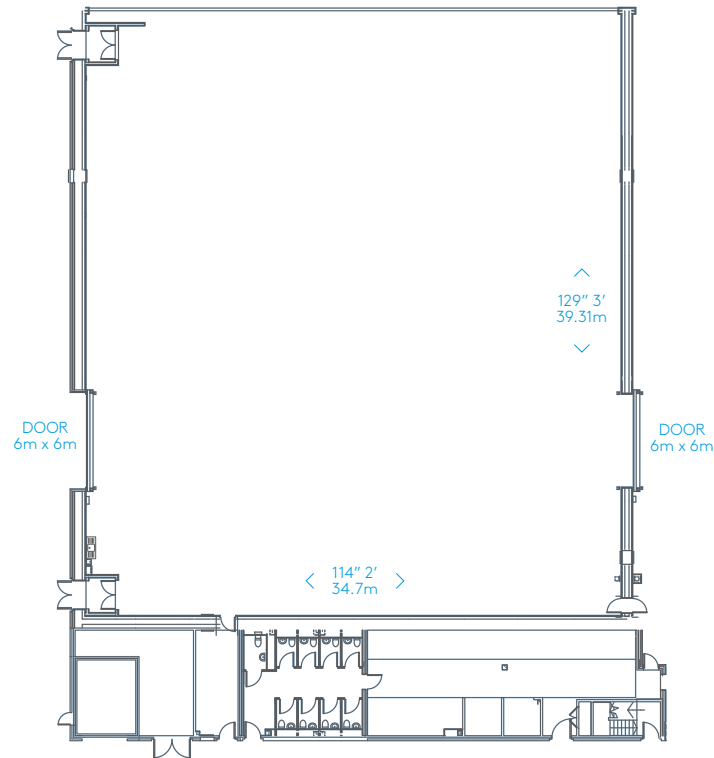
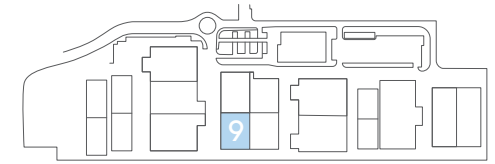
15,884sqft/1475.6m²

129' 3" x 114' 2"

39.31m x 34.7m

Clear height: 35' 6"/10.83m

Drive in access: 6m x 6m



STAGE 09

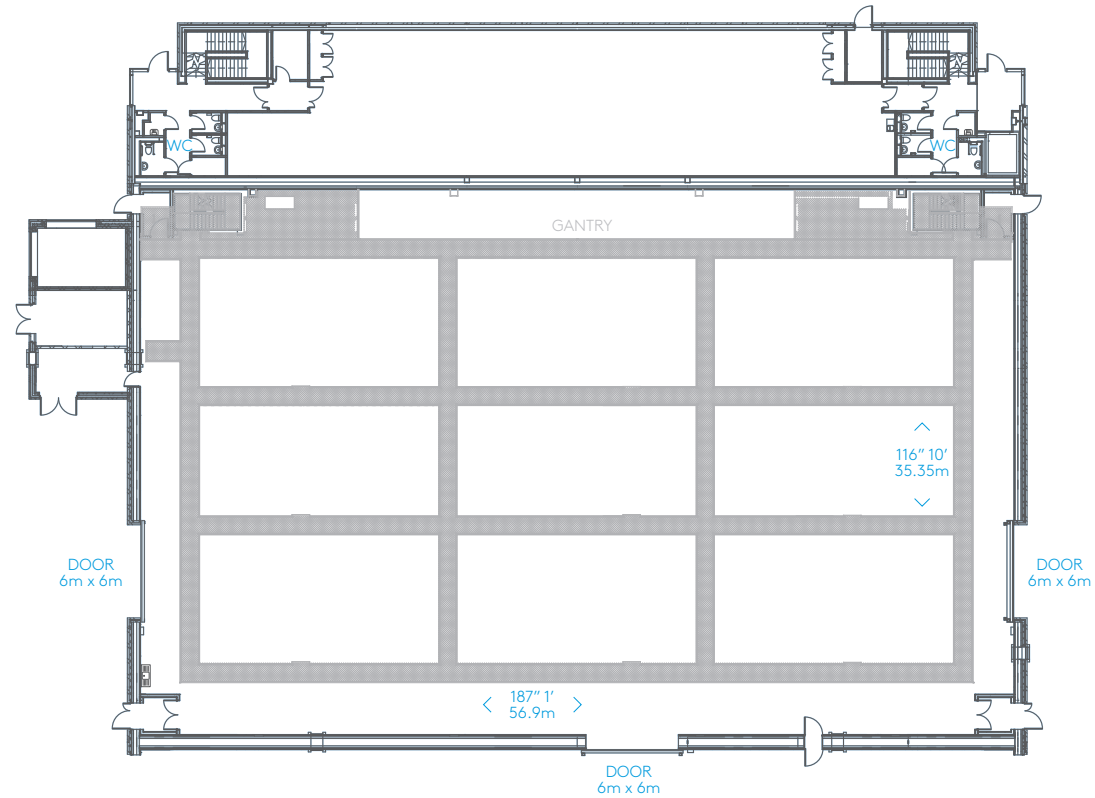
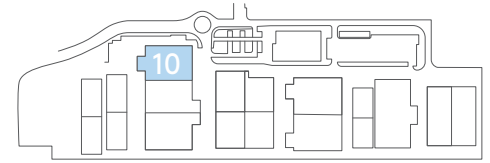
16,029sqft/1489.1m²

129' 3" x 114' 2"

39.31m x 34.7m

Clear height: 35' 6"/10.83m

Drive in access: 6m x 6m



STAGE 10

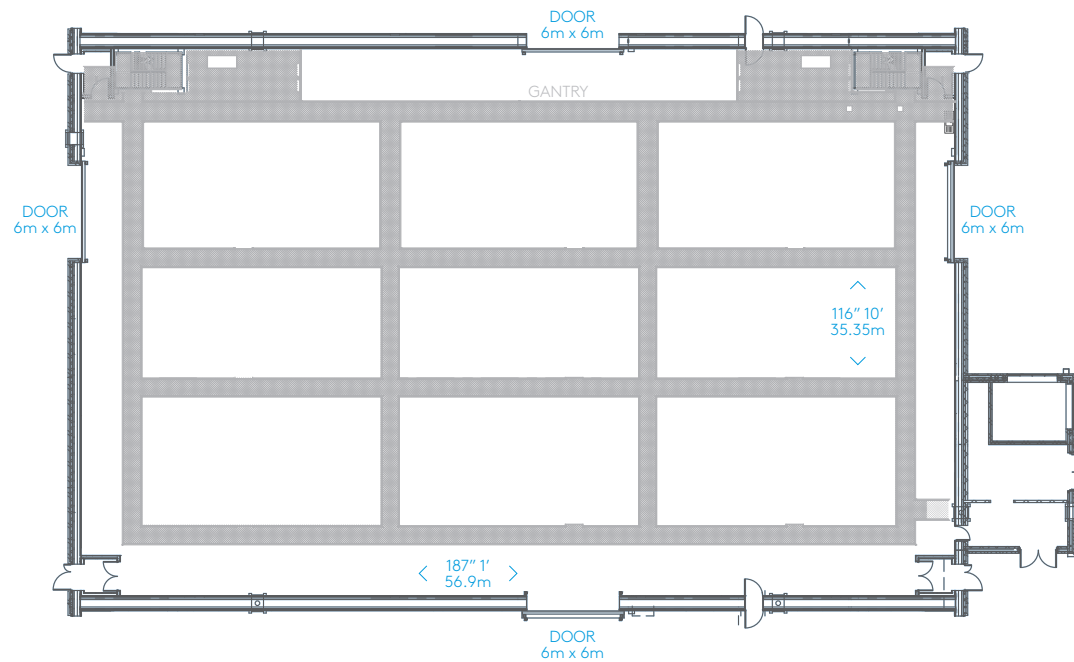
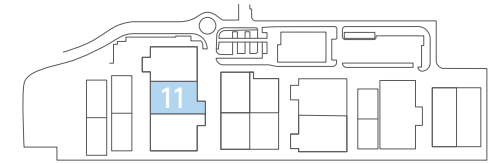
23,193sqft/2154.7m²

187' 1" x 116' 10"

56.9m x 35.35m

Clear height: 50'/15.24m

Drive in access: 6m x 6m



STAGE 11

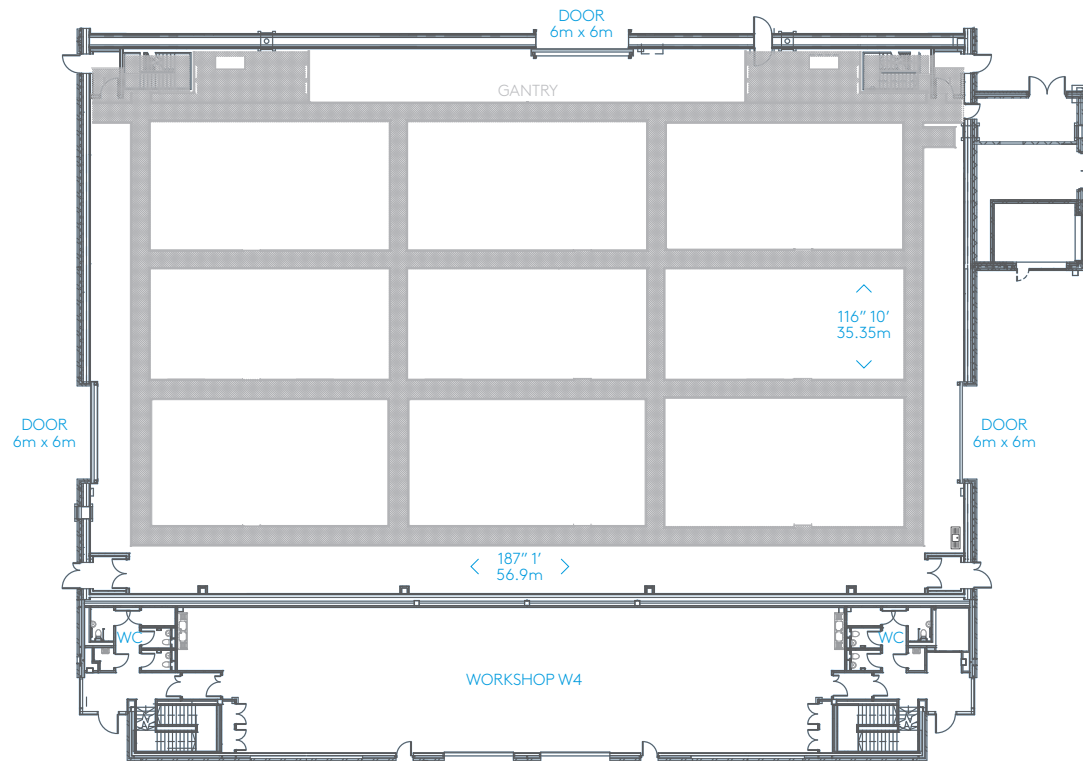
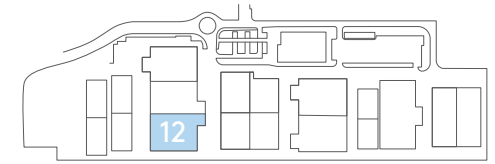
23,193sqft/2154.7m²

187' 1" x 116' 10"

56.9m x 35.35m

Clear height: 50'/15.24m

Drive in access: 6m x 6m



STAGE 12

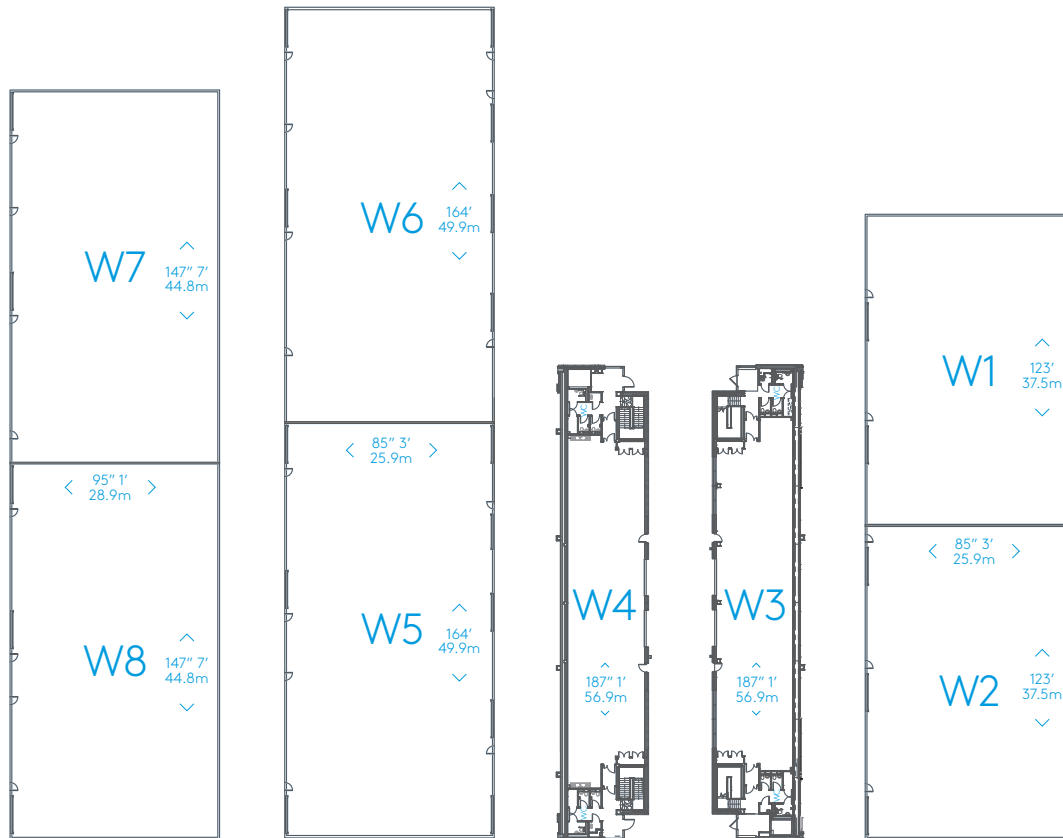
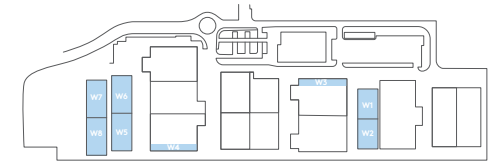
23,193sqft/2154.7m²

187' 1" x 116' 10"

56.9m x 35.35m

Clear height: 50'/15.24m

Drive in access: 6m x 6m



WORKSHOP	SQFT	HEIGHT TO EAVES	HEIGHT TO RIDGE
W1	9,800	20' 8"	30' 10"
W2	11,194	20' 8"	30' 10"
W3	4,130	20' 8"	N/A
W4	4,130	20' 8"	N/A
W5	14,000	20' 8"	30' 10"
W6	14,000	20' 8"	30' 10"
W7	14,050	20' 8"	32' 1"
W8	14,050	20' 8"	32' 1"

WORKSHOP BLOCKS


Workshop areas are conveniently located adjacent to stage buildings.


Workshops W3 and W4 are situated directly alongside Stages 04 and 12.

EASTBROOK STUDIOS LONDON



 Eastbrook Studios

 Additional car parking approx 3.5acres/270 spaces

 Backlot area - mixed level/shrubland approx 15.5acres*
**Use subject to local council approval*