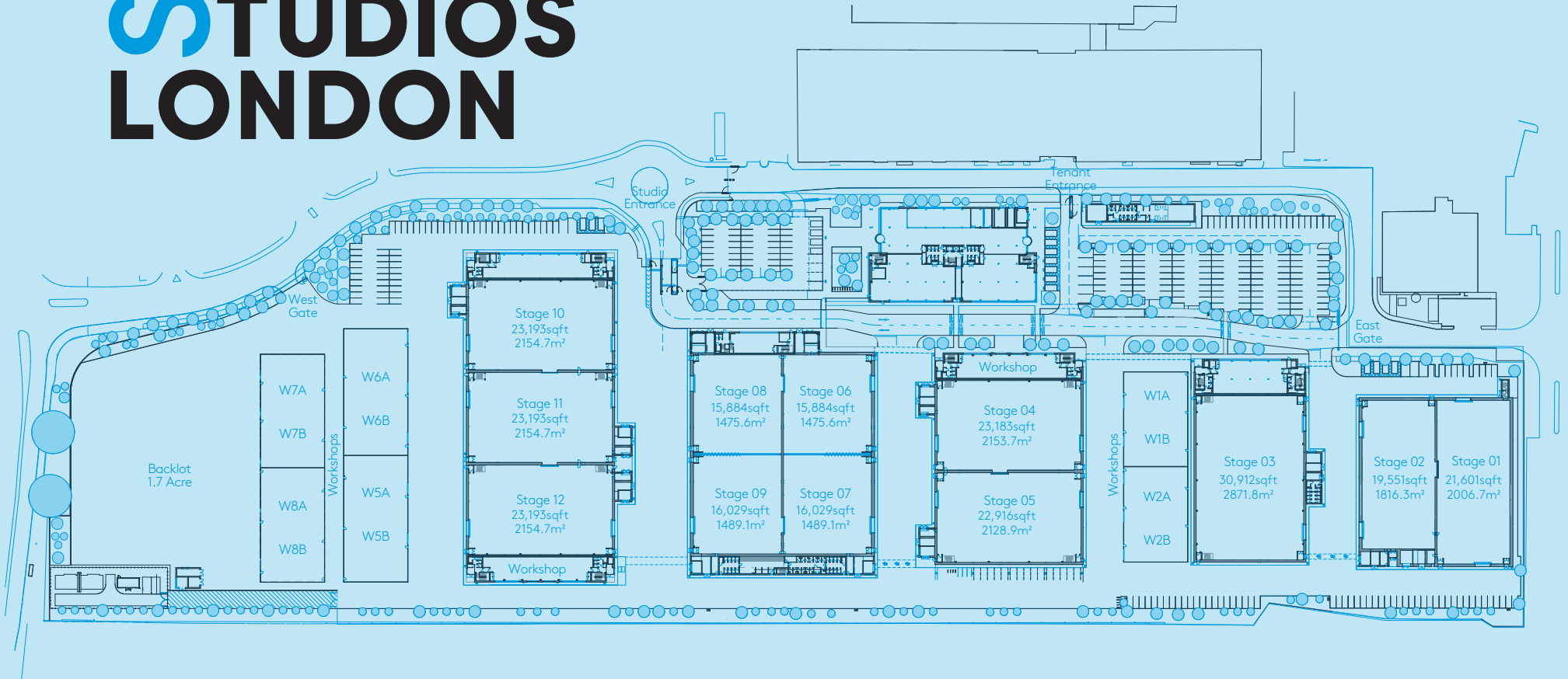


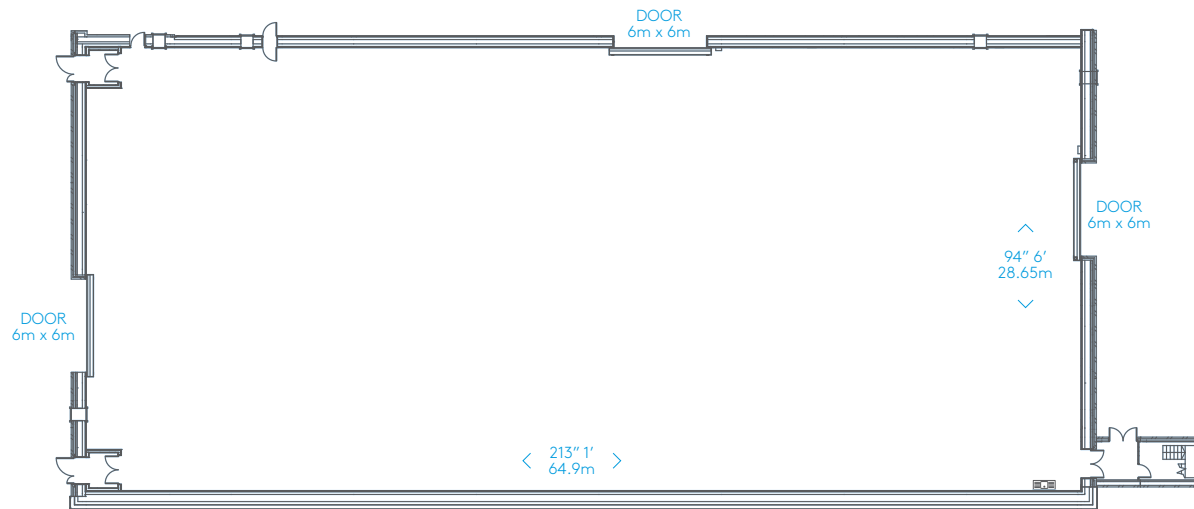
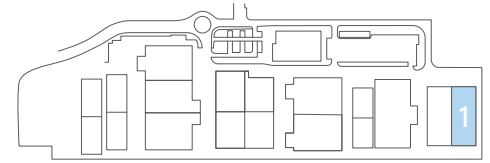
EASTBROOK STUDIOS LONDON



STAGE PLANS

Issue 1.1 March 2024

Not to scale



STAGE 01

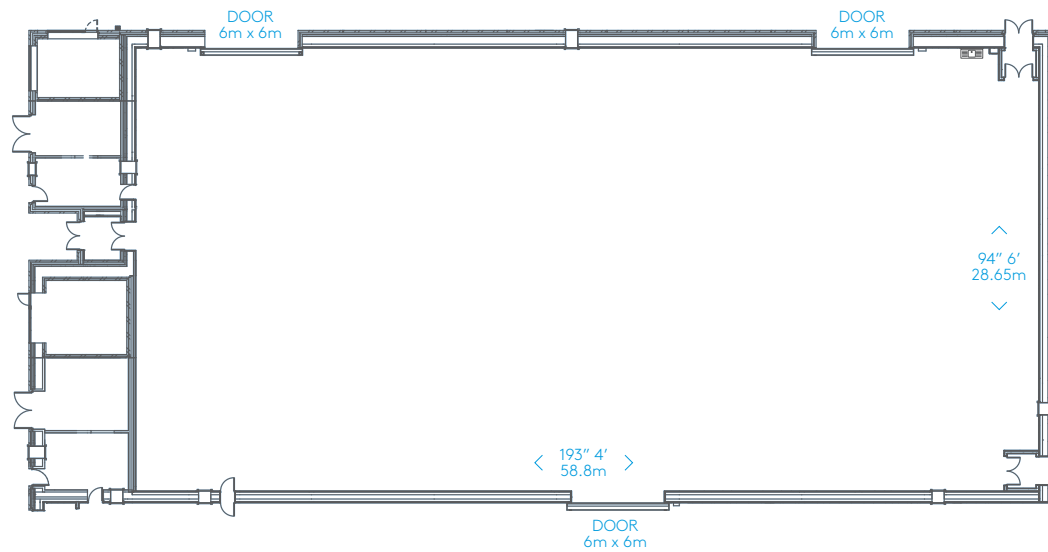
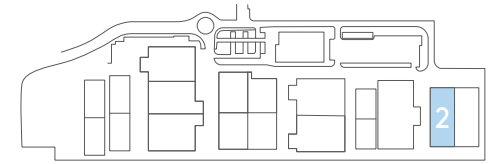
21,601sqft/2006.7m²

213' 1" x 94' 6"

64.9m x 28.65m

Clear height: 35' 7½"/10.85m

Drive in access: 6m x 6m



STAGE 02

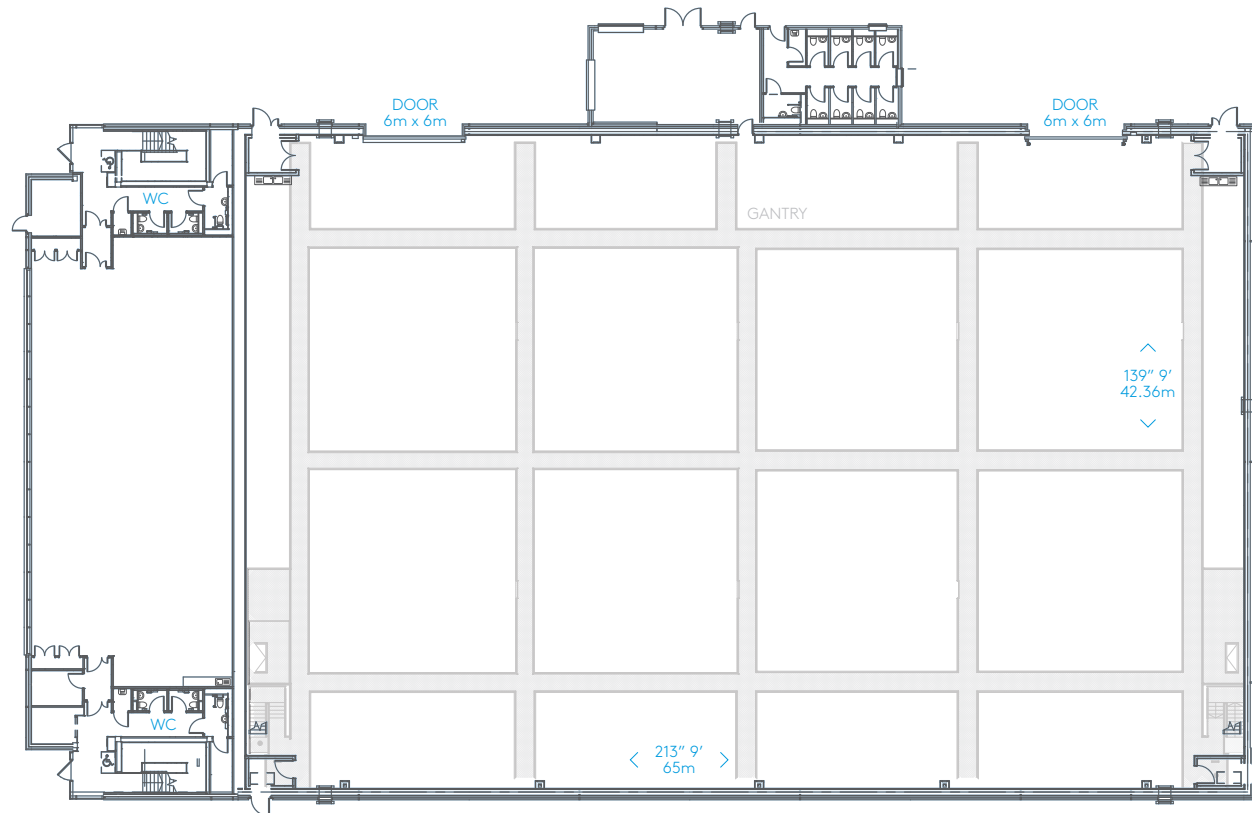
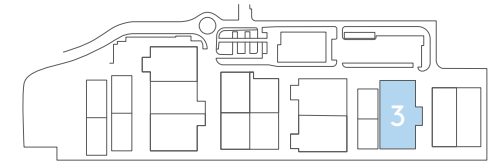
19,551sqft/1816.3m²

193' 4" x 94' 6"

58.8m x 28.65m

Clear height: 35' 7½"/10.85m

Drive in access: 6m x 6m



STAGE 03

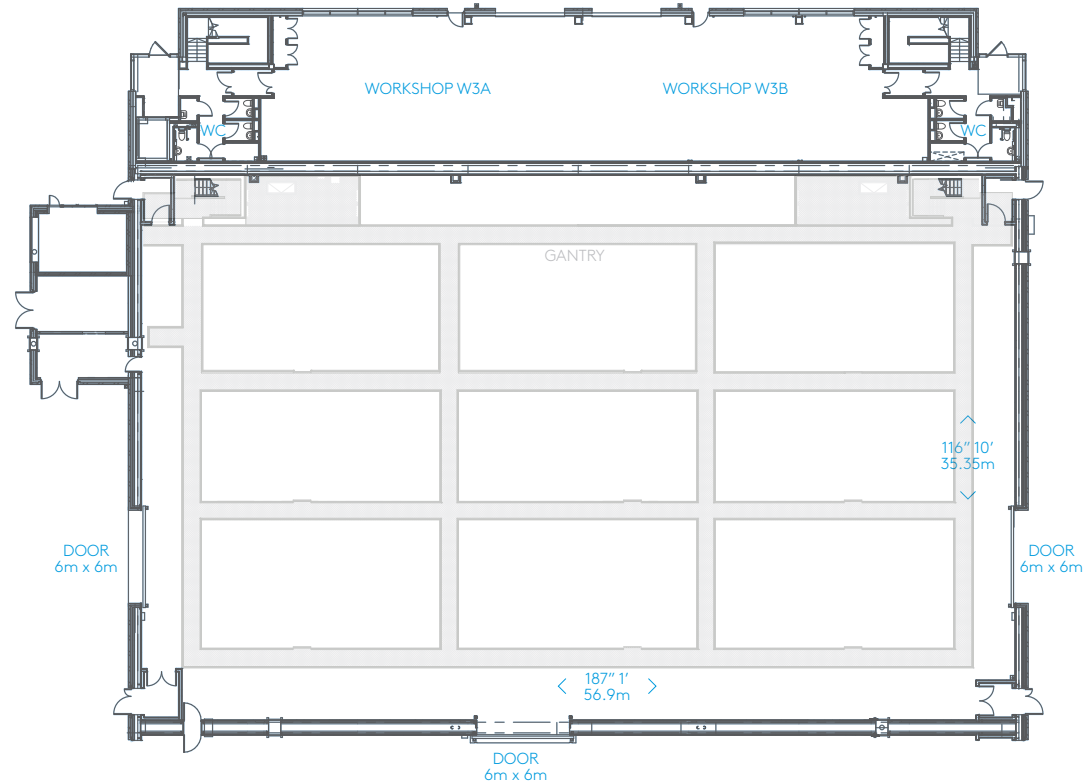
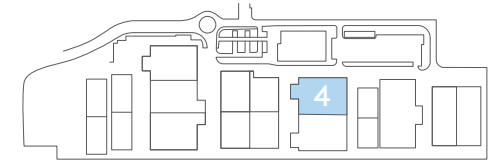
30,912sqft/2871.8m²

213' 9" x 139' 9"

65m x 42.36m

Clear height: 50'/15.24m

Drive in access: 6m x 6m



STAGE 04

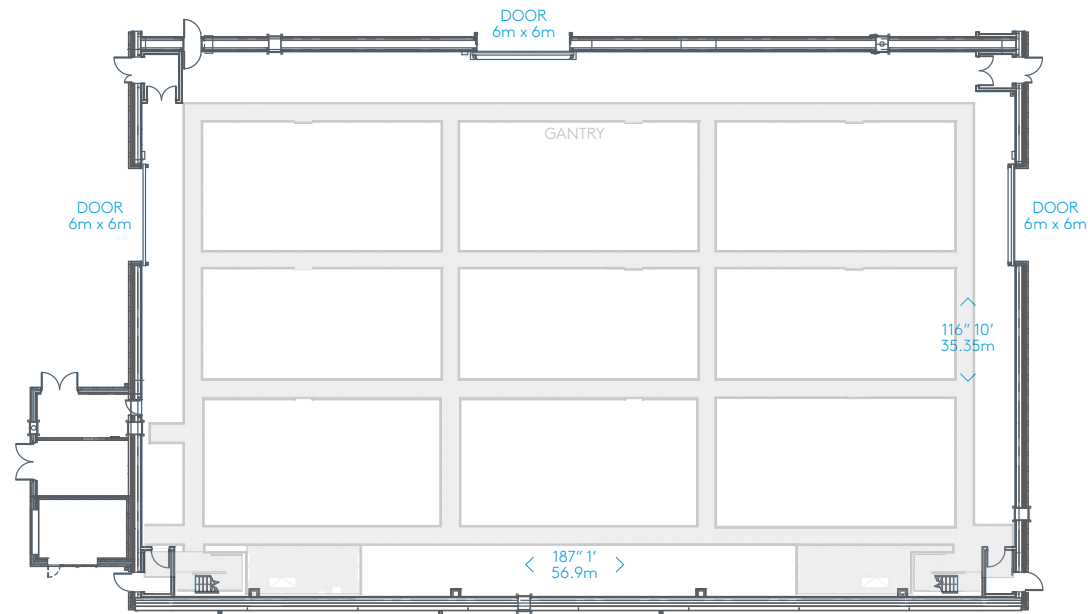
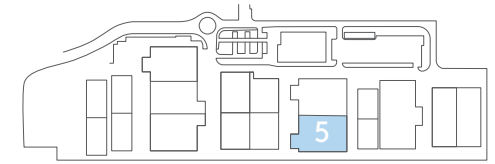
23,183sqft/2153.7m²

187' 1" x 116' 10"

56.9m x 35.35m

Clear height: 50'/15.24m

Drive in access: 6m x 6m



STAGE 05

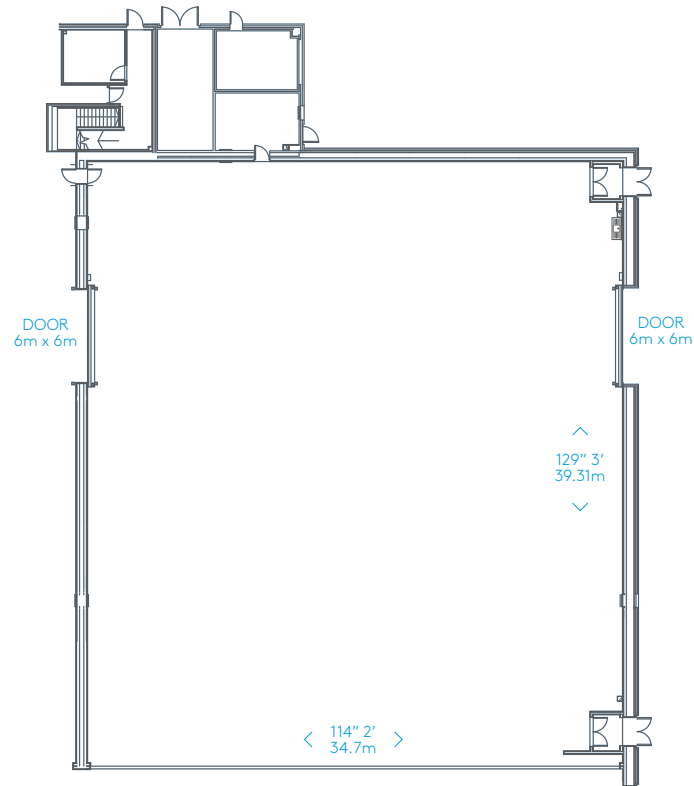
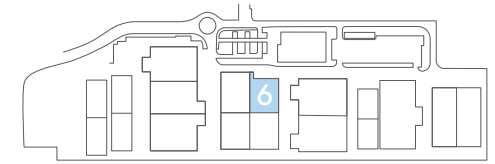
22,916sqft/2128.9m²

187' 1" x 116' 10"

56.9m x 35.35m

Clear height: 50'/15.24m

Drive in access: 6m x 6m



STAGE 06

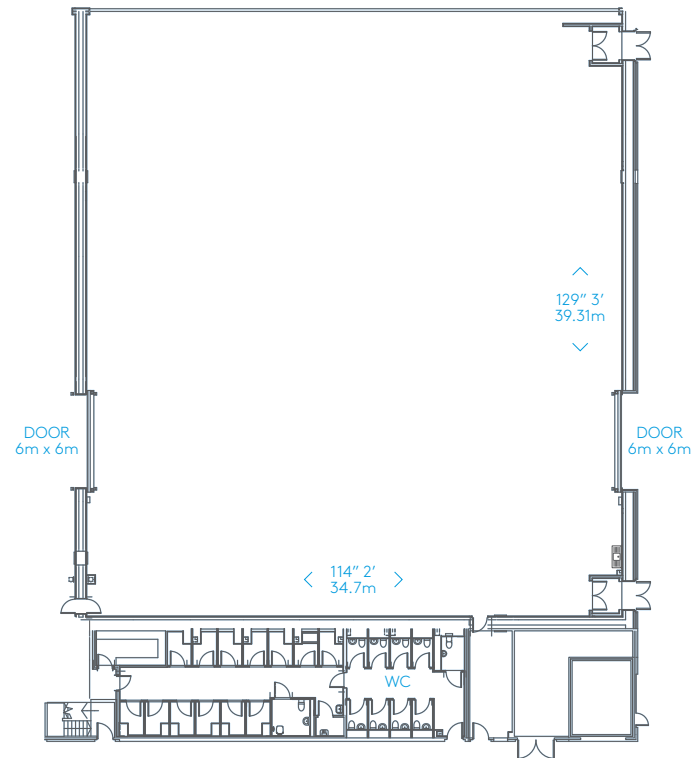
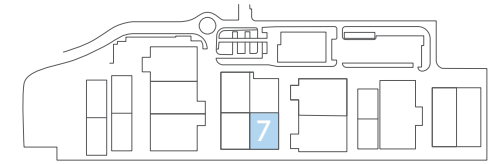
15,884sqft/1475.6m²

129' 3" x 114' 2"

39.31m x 34.7m

Clear height: 35' 6"/10.83m

Drive in access: 6m x 6m



STAGE 07

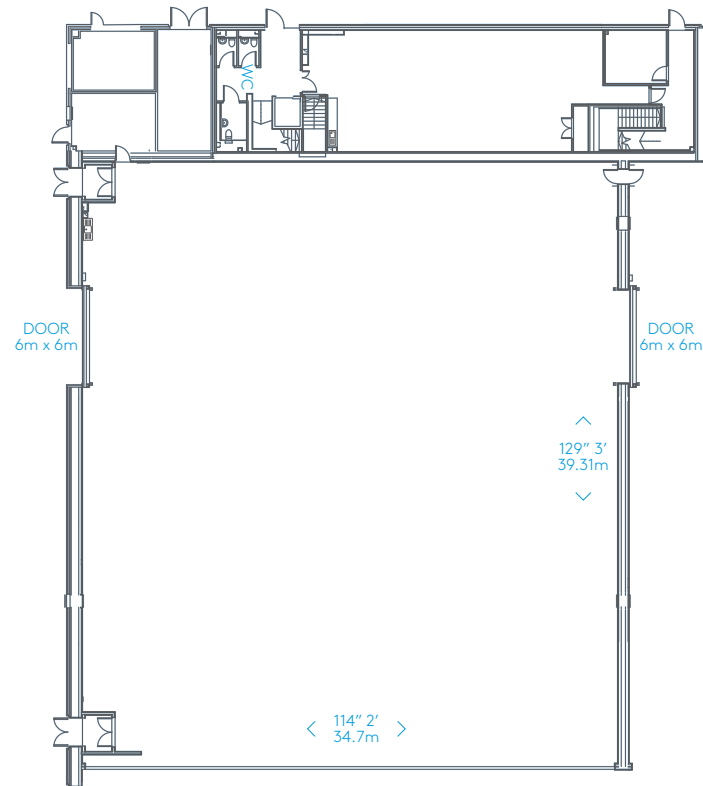
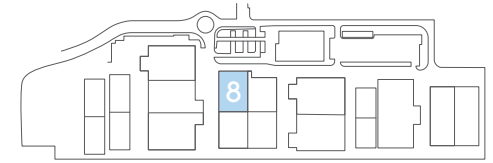
16,029sqft/1489.1m²

129' 3" x 114' 2"

39.31m x 34.7m

Clear height: 35' 6"/10.83m

Drive in access: 6m x 6m



STAGE 08

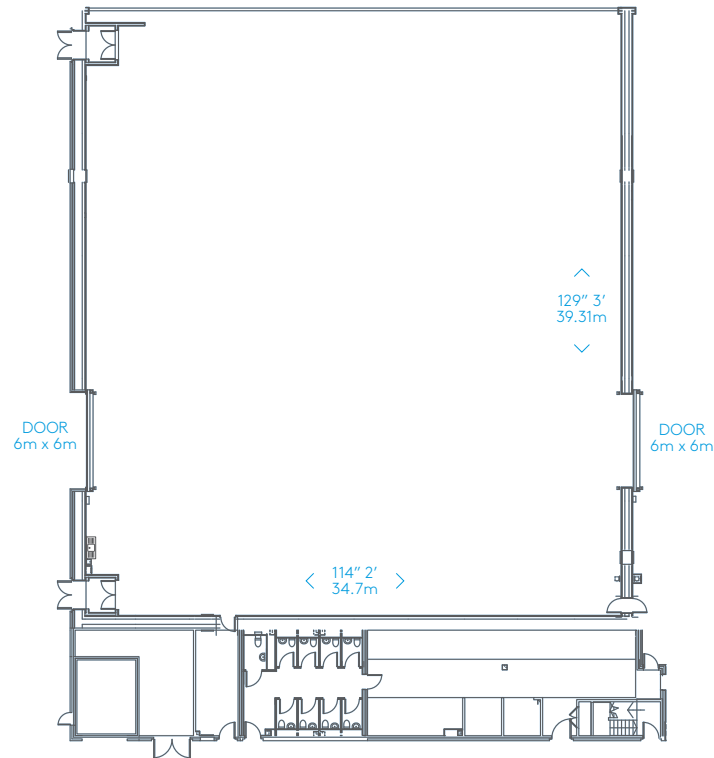
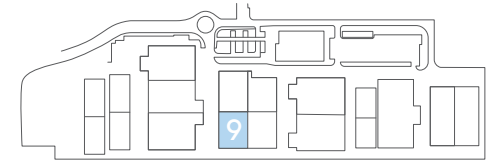
15,884sqft/1475.6m²

129' 3" x 114' 2"

39.31m x 34.7m

Clear height: 35' 6"/10.83m

Drive in access: 6m x 6m



STAGE 09

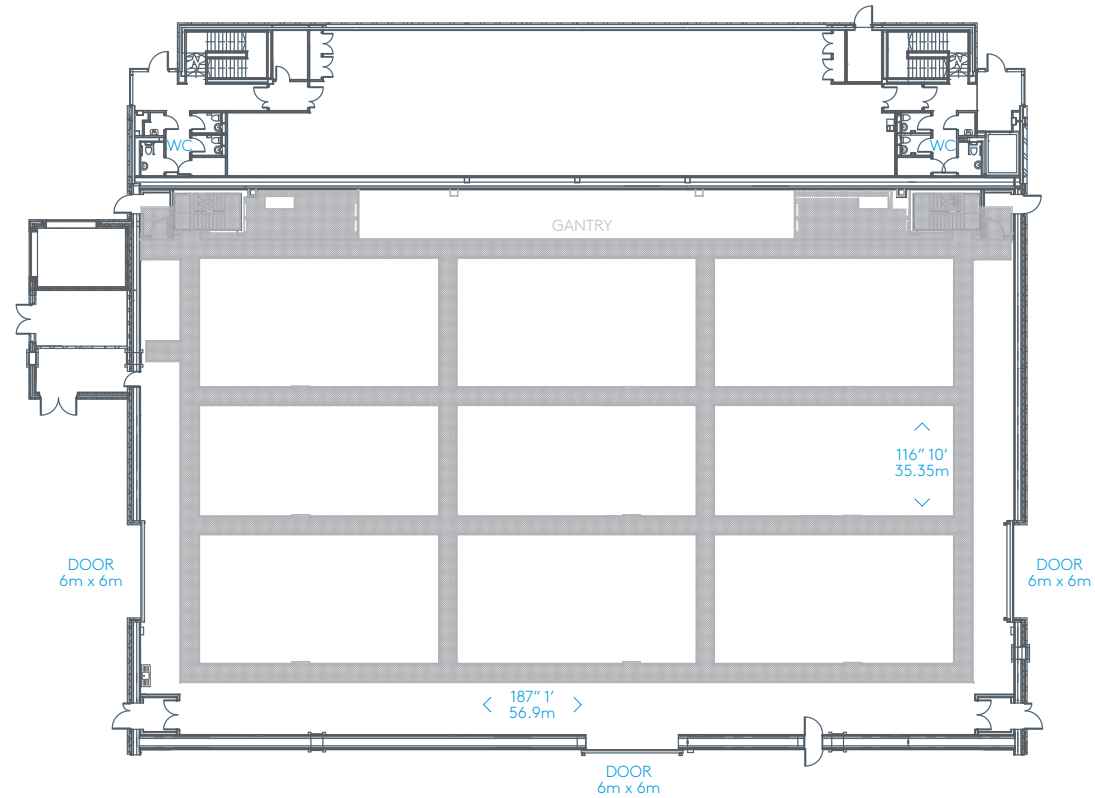
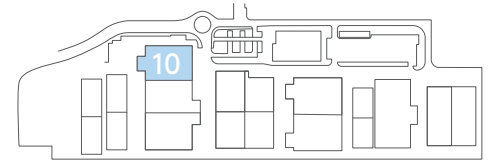
16,029sqft/1489.1m²

129' 3" x 114' 2"

39.31m x 34.7m

Clear height: 35' 6"/10.83m

Drive in access: 6m x 6m



STAGE 10

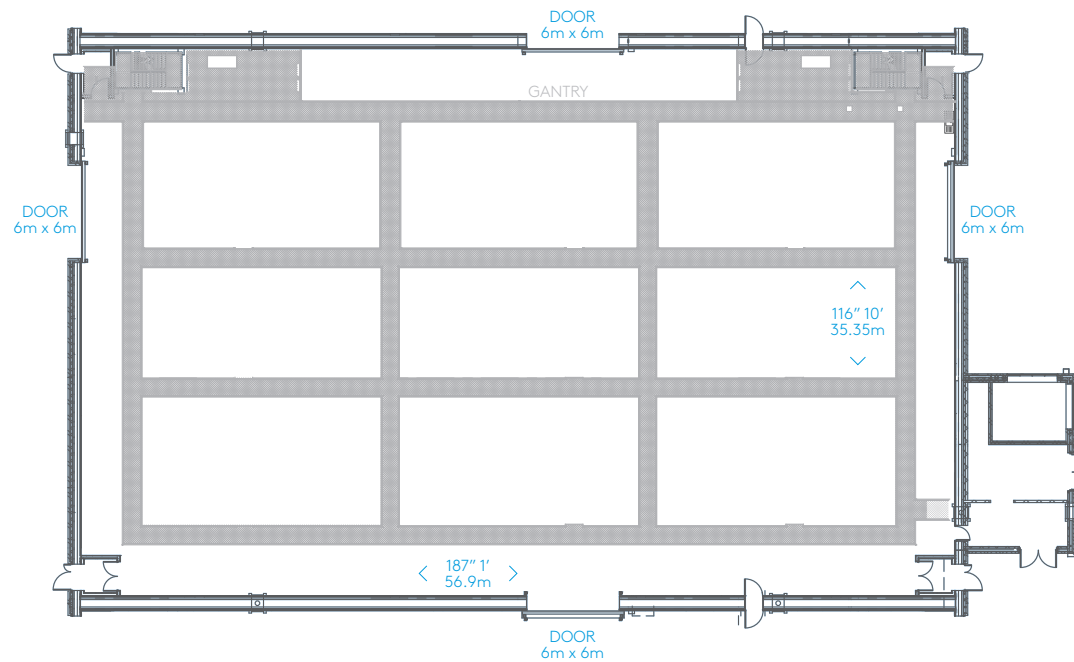
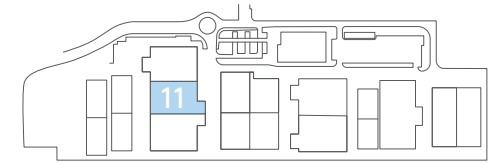
23,193sqft/2154.7m²

187' 1" x 116' 10"

56.9m x 35.35m

Clear height: 50'/15.24m

Drive in access: 6m x 6m



STAGE 11

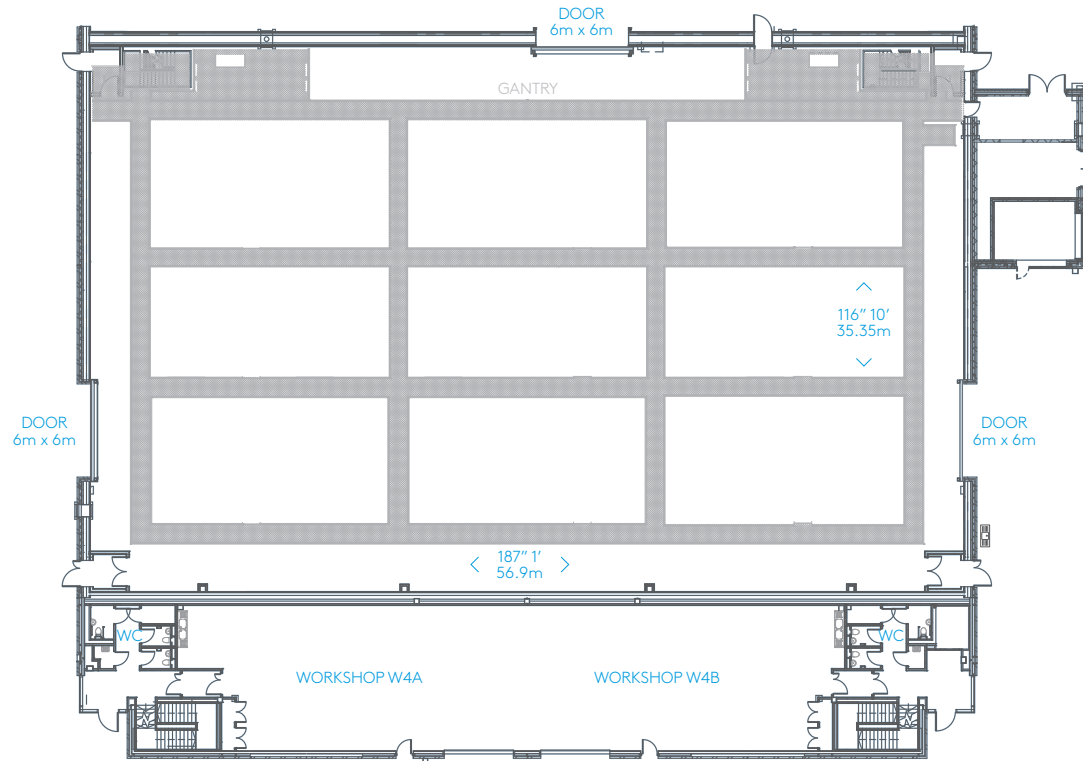
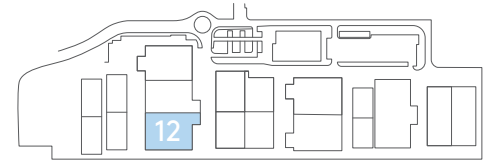
23,193sqft/2154.7m²

187' 1" x 116' 10"

56.9m x 35.35m

Clear height: 50'/15.24m

Drive in access: 6m x 6m



STAGE 12

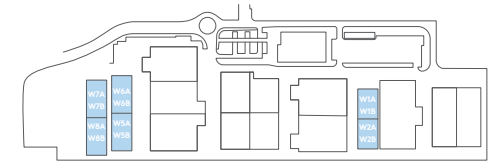
23,193sqft/2154.7m²

187' 1" x 116' 10"

56.9m x 35.35m

Clear height: 50'/15.24m

Drive in access: 6m x 6m



WORKSHOP BLOCKS

Workshop areas are conveniently located adjacent to stage buildings.

Workshops W3A/W3B/W4A/W4B are situated alongside stages 04 and 12.